

RH

Rebar Hook

Right Angle Connector: Threaded Rod to Rebar

Steel Dog® Rebar Hooks are a low-cost, fast means of connecting threaded rod at right angles anywhere along the length of rebar for variety of purposes. The unique arrangement of two opposing hooks makes it easy to make a field connection to rebar with limited clearance.

FEATURES:

- Unique “opposed hook” design provides secure attachment in limited space
- Hook held in position by the connecting threaded rod. NO SEPARATE NUTS OR OTHER FASTENERS REQUIRED.
- Different hooks for four standard threaded rod types
- Attach to up to #9 rebar (for larger sizes, see Rebar Coil Clamp)

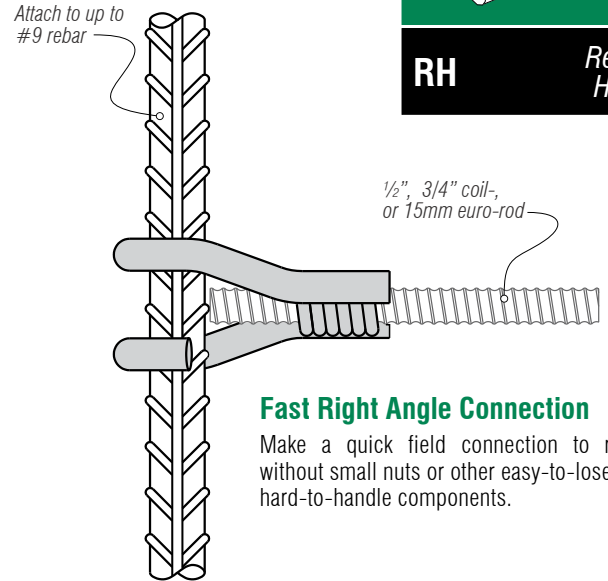
MATERIAL: Carbon steel. Some sizes available in stainless steel on special order.

FINISH: None. Electroplated zinc, galvanized, and epoxy finishes available: consult factory.

MAXIMUM SAFE WORKING LOAD: See chart

APPLICATIONS:

- Stay-Form® blind side wall ties
- Tying low edge forms to rebar mats for slab pours
- Tying bottoms of forms into vertical mudslab rebar
- Self-supporting insert for shotcrete walls

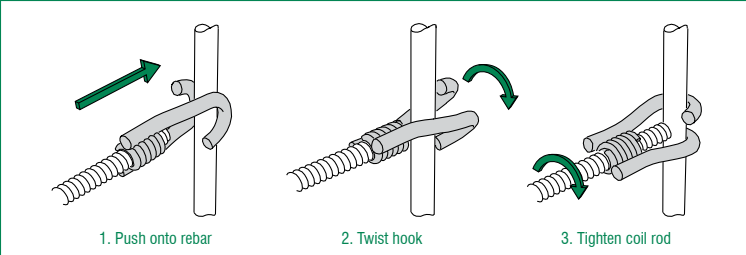


Fast Right Angle Connection

Make a quick field connection to rebar without small nuts or other easy-to-loose and hard-to-handle components.



Installation:

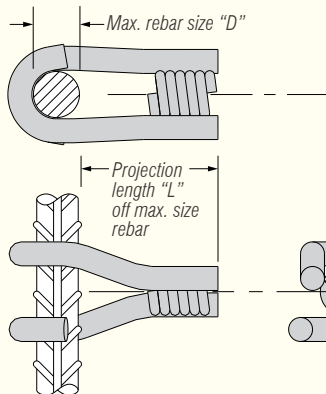


1. Push onto rebar

2. Twist hook

3. Tighten coil rod

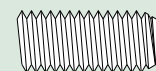
ORDER INFO



Product Code

	RH-6	RH-48	RH-8	RH-8D	RHF-6	RHP-48
Safe Working Load*	1800 lbs	3000 lbs	3000 lbs	3000 lbs	1800 lbs	3000 lbs
Max. Size Rebar "D"	#6	#9	#9	#9	#6	N/A
Threaded Rod Type	1/2" coil	1/2" coil	3/4" coil	15mm coil	1/2" coil	1/2" coil
Projection Length "L"	2 1/4"	3 1/4"	3 1/4"	3 1/4"		N/A
No. of Coil Turns	6	8	8	5	12	8
Box Quantity	100 pcs	50 pcs	50 pcs	50 pcs	25 pcs	50 pcs
Box Weight	40 lbs	42 lbs	48 lbs	49 lbs		42 lbs

*2-to-1 Safety Factor



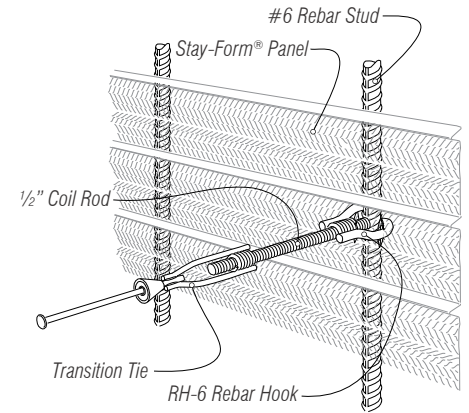
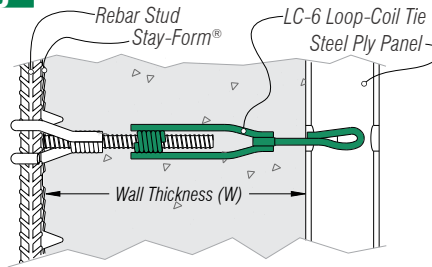
Available with
NC Threading



CAUTION

- DO NOT EXCEED THE SAFE WORKING LOAD (see chart on page one)
- REBAR HOOKS ARE INTENDED ONLY FOR MAKING TEMPORARY ATTACHMENTS TO REBAR FOR THE PLACEMENT OF CONCRETE. NOT FOR USE AS A PERMANENT LOAD CARRYING ELEMENT
- BE SURE THAT THE THREADED ROD EXTENDS AT LEAST 1/4" BEYOND COIL
- DO NOT BEND, TWIST OR HAMMER REBAR HOOKS
- DO NOT USE ANY PARTS THAT APPEAR TO BE DAMAGED, CRACKED, OR ABUSED
- NEVER USE FOR LIFTING PURPOSES

Stay-Form® Blind Side Forming

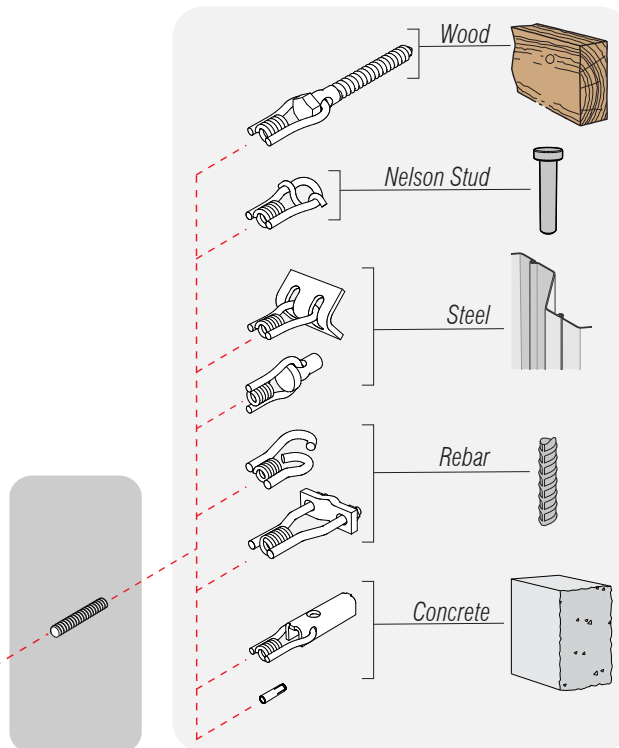
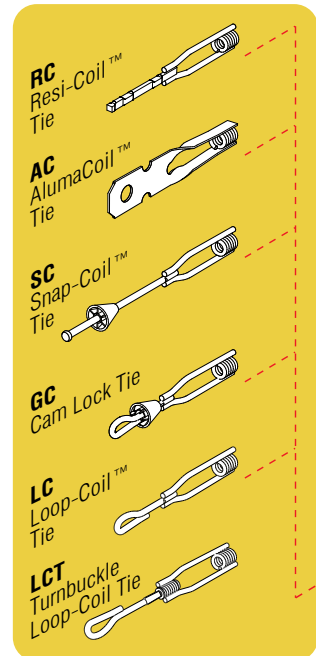


Stay-Form blind side wall tie using RH-6's and LC-6 Loop-Coil Ties.

A blind side wall is a freestanding concrete wall formed inches off from an existing wall--too close for removable form panels to be used on the "blind" side. A stay-in-place steel mesh--such as **Amico Stay-Form®**--forms the blind side, and is attached to reusable formwork with RH-6's and Steel Dog Transition Ties.

Complete One-Sided Forming Solutions

The Steel Dog® Rebar Hook is only one of a system of off-the-shelf, interchangeable forming components using industry-standard 1/2" coil rod as the threaded element.



For Larger Rebar:

See also the Steel Dog RHC Rebar Coil Clamp, for attachment to up to #11 rebar, using a keeper plate and nuts.

