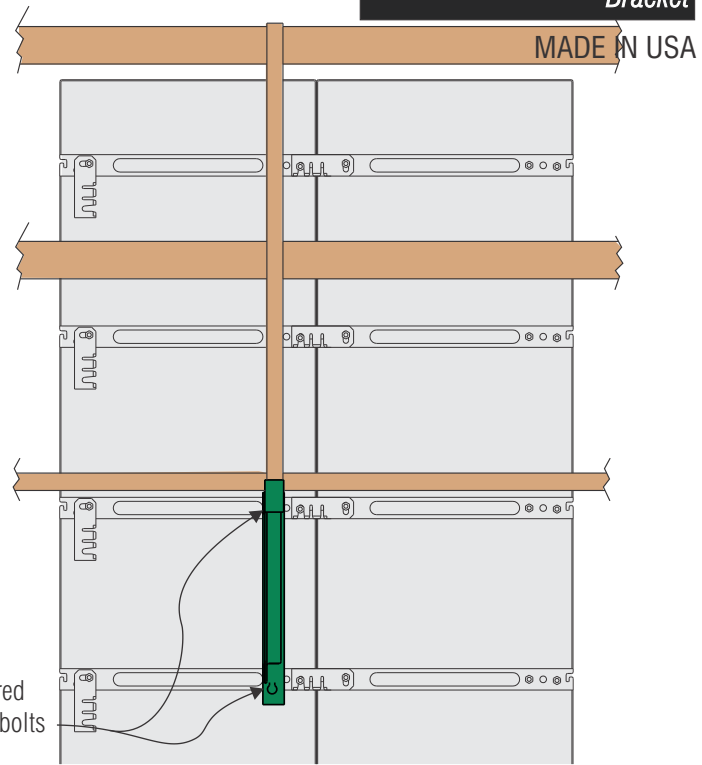
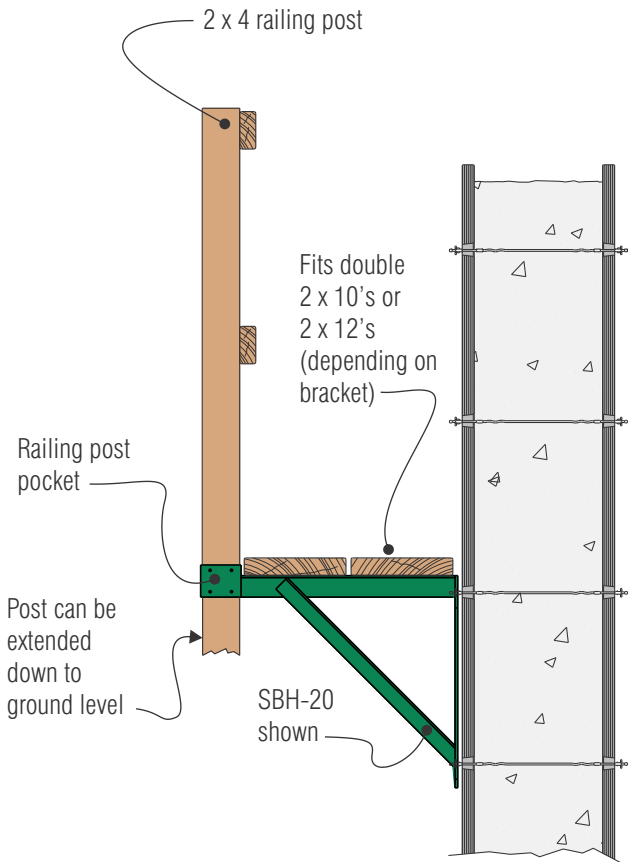


SB Scaffold Bracket



Scaffold Bracket with Railing Pocket

Provides safe access to top of 1-1/8" form panels

Steel Dog® Scaffold Brackets have keyhole slots to attach to the hex head shoulder bolts of Steel Dog® panels or compatible 1-1/8" form panels. Each Scaffold Bracket attaches to **two bolts** to safely carry the load. Heavy duty, welded 1/4" steel and angle iron construction. Keyhole slots provide a strong and secure means of attachment to form panel shoulder bolts.

FEATURES:

- Two-bolt attachment to forms
- 2x4 railing post pocket with nail holes
- Scaffold plank support arm with nail holes
- Sturdy angle iron diagonal brace

MATERIAL: A36 steel

FINISH: Green primer paint

APPLICATION: Intended for the support of scaffolding planks on 1-1/8" form panels. When properly used, can help users meet OSHA safety requirements for access to elevated areas of formwork.

Product Code	SBH-20	SBM-20	SBL-20	SBU-24
Bar spacing	16"	20"	24"	16"-20"-24"
Fits Steel Dog® panel series	TFH	TFM	TFL	TFL-TFM-TFH
Platform width	20"	20"	20"	24"
Railing pocket for 2x4 post	Yes	Yes	Yes	Yes
SAFE WORKING LOAD	400 lbs	400 lbs	400 lbs	400 lbs
Max. bracket spacing	8 ft	8 ft	8 ft	8 ft
Part Weight	11 lbs	12 lbs	13 lbs	14 lbs
*SWL based on 4-to-1 safety factor, 18" from face of form panel, based on minimum 1500 lb pull-out strength of shoulder bolt. Special order brackets available: consult factory				

CAUTION

- DO NOT EXCEED THE SAFE WORKING LOAD
- EXAMINE BRACKETS BEFORE USE. DO NOT USE IF BENT, WORN, OR IF CRACKING OF WELDS IS EVIDENT
- FOLLOW ALL APPLICABLE LOCAL, STATE, AND FEDERAL GUIDELINES AS TO APPROPRIATE USE
- NOT RATED AS TIE-OFF POINT FOR FALL PROTECTION EQUIPMENT